



THE *Episcopal* CHURCH IN  
**WEST MISSOURI**



# 2022

## Plan For Ministry

New Life — The Episcopal Church in West Missouri



A First Look  
at the 2022  
Plan for  
Ministry

Supporting  
One Ministry in  
West Missouri

The 132<sup>nd</sup> Annual Convention of The Diocese of West Missouri



THE  
*Episcopal*  
CHURCH IN

**WEST MISSOURI**

# WHERE WE'VE BEEN

# History of Covenanted Portion Changes

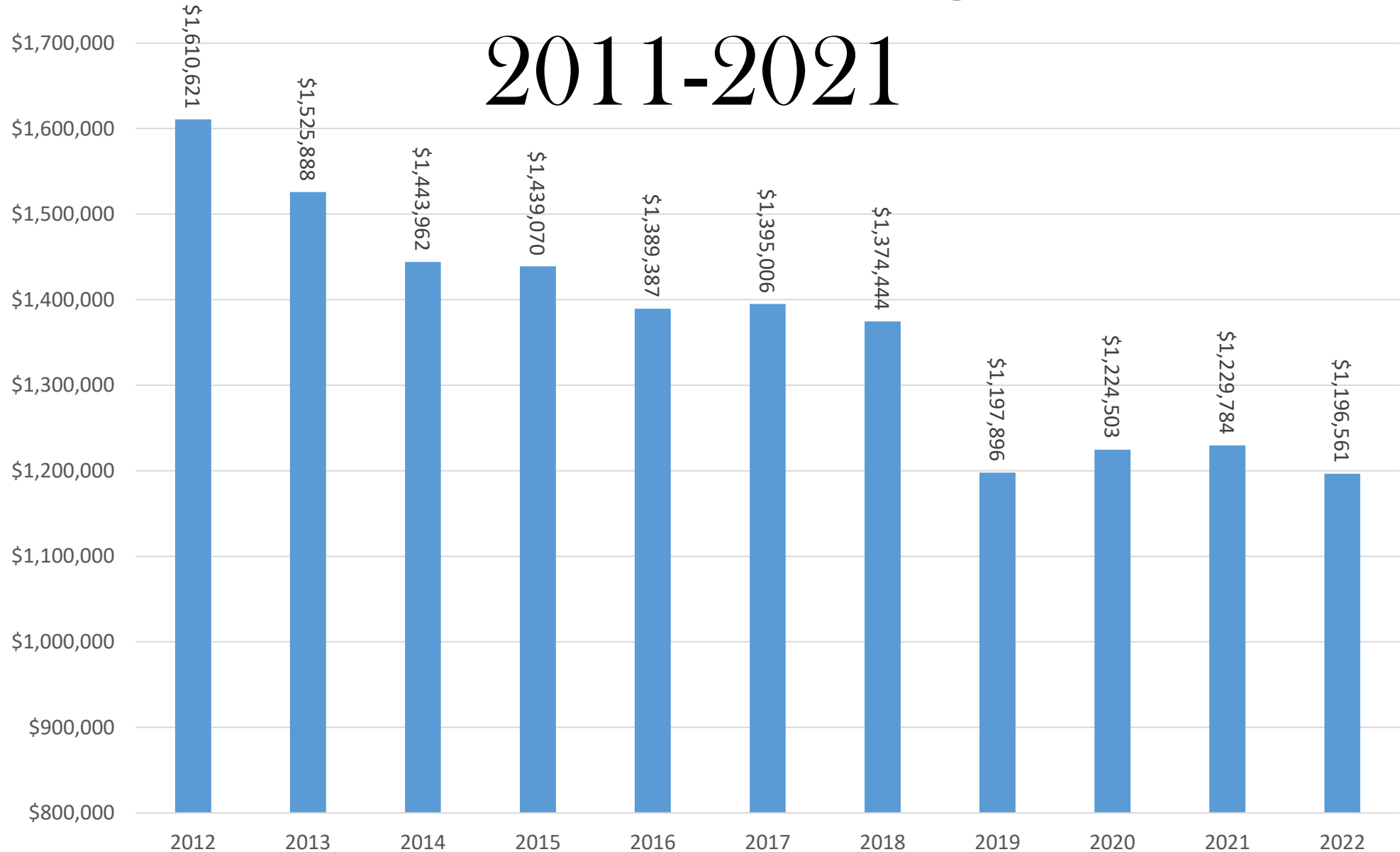
<b>Applicable Fiscal Years</b>	<b>\$0 - 50K</b>	<b>\$50K – 100K</b>	<b>\$100K – 150K</b>	<b>\$150K +</b>	<b>Assessment Base</b>	<b>% of PfM Income from Covenanted Portions</b>
<b>1995-2005</b>	14%	19%	19%	19%	2 yr. avg. of operating revenue	<b>90.96% (in 2005)</b>
<b>2006-2010</b>	<b>14%</b>	<b>15%</b>	<b>16%</b>	<b>18%</b>	2 yr. avg. of operating revenue	<b>86.36%</b>
<b>2011</b>	14%	15%	16%	18%	<b>Lower of 2 yr. avg. or prior yr.</b>	<b>93.06%</b>
<b>2012-2013</b>	14%	15%	16%	18%	<b>Lower of 2 yr. avg. or prior yr. minus Outreach</b>	<b>88.59%</b>
<b>2014-2015</b>	<b>13%</b>	<b>14%</b>	<b>15%</b>	<b>17%</b>	Lower of 2 yr. avg. or prior yr. minus Outreach	<b>70.54%</b>
<b>2016-2018</b>	<b>12.38%</b>	<b>13.38%</b>	<b>14.38%</b>	<b>16.38%</b>	Lower of 2 yr. avg. or prior yr. minus Outreach	<b>68.23%</b>
<b>2019-2021</b>	<b>10.52%</b>	<b>11.37%</b>	<b>12.22%</b>	<b>13.92%</b>	Lower of 2 yr. avg. or prior yr. minus Outreach	<b>63.31%</b>

# 2021 Covenanted Portion Formula

- **RECOMMENDATION** – *The Diocesan Council's Finance Committee* recommends carrying our current formula forward.
- Computation of Covenanted Portion employs figures from the two (2) most recent Parochial Reports. (Per Canons: to be filed each March)
- To figure out the Calculation Base, start with reported Operating Revenue, then subtract reported Outreach.
- The Calculation Base is the lesser of:
  - 1.) the average of the two prior years, or
  - 2.) the actual of the prior year.
- The appropriate Calculation Base is multiplied by:
  - 10.52% of the first \$50,000
  - 11.37% of the next \$50,000
  - 12.22% of the next \$50,000
  - 13.92% on anything over \$150,000

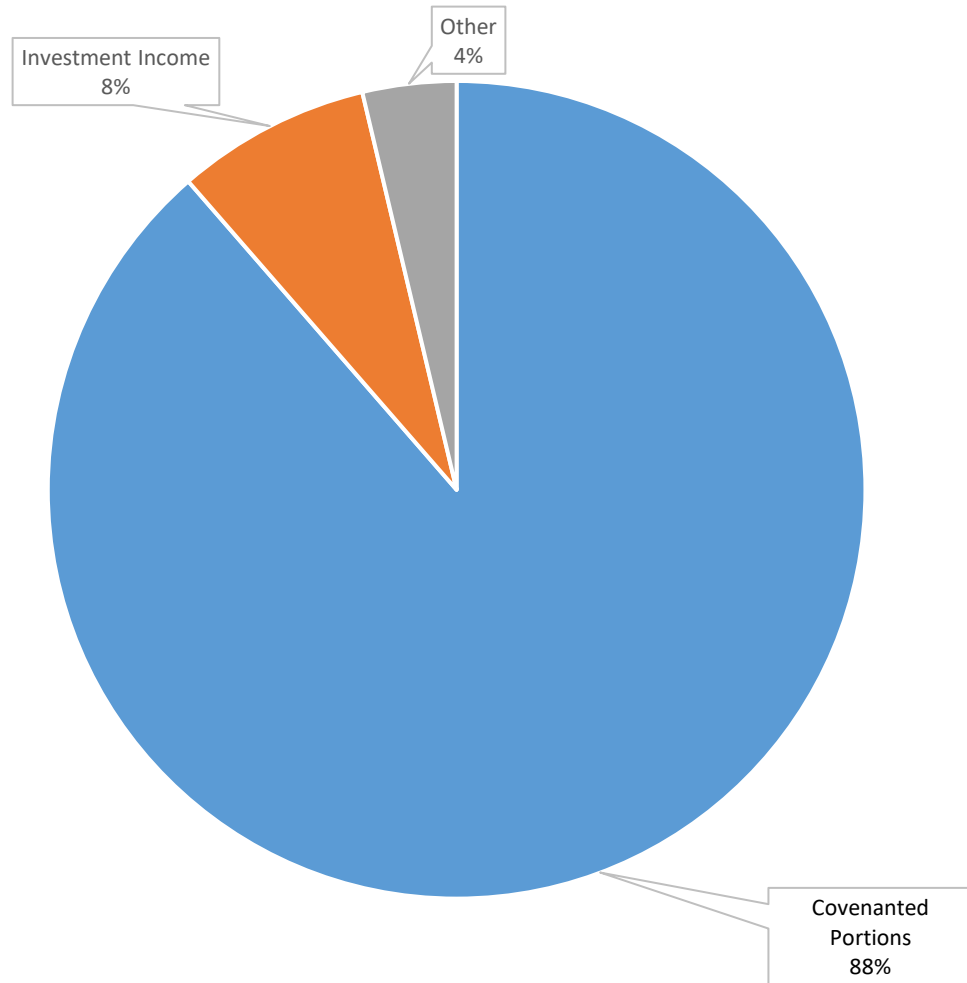


# Parochial Income Through the Years: 2011-2021

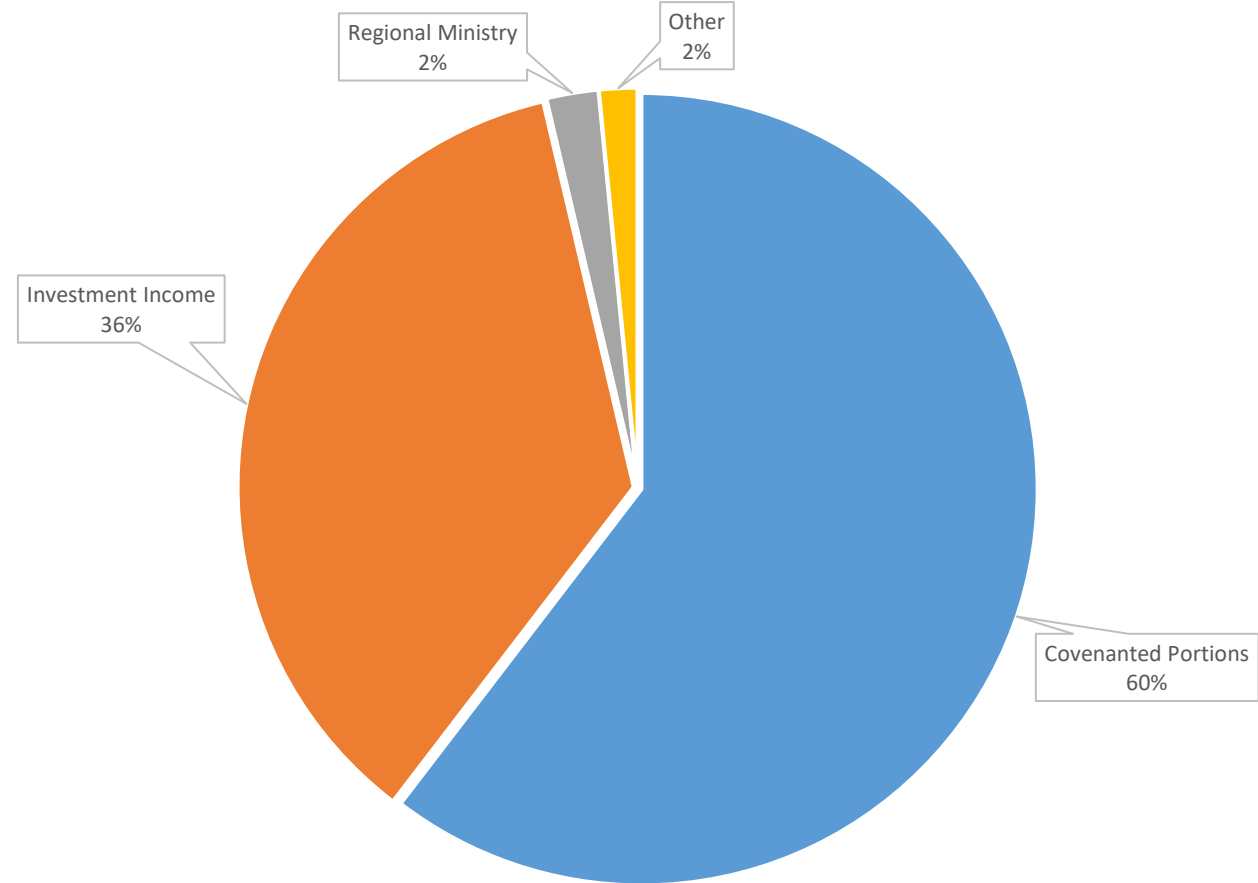


# Sources of Income: 2012 vs 2022

2012 Income



2022 Income



# NOTING THE LAG:

## From Parochial Income to a Plan For Ministry

- The 2022 Covenanted Portions (the diocesan income expected from parishes) are based on Parochial Reports from 2019 and 2020.
- Changes in operating revenues to the churches during this time of COVID-19 are reflected in the 2020 parochial reports.
- The 47 churches of the Diocese of West Missouri saw a 4% (\$30k) drop in Operating Revenue.
- Long-term investment asset performance has been strong and continues to represent a larger portion of the diocese operating revenue.



The 132<sup>nd</sup> Annual Convention of The Diocese of West Missouri



THE  
*Episcopal*  
CHURCH IN

**WEST MISSOURI**

# WHERE WE ARE IN 2021

# Responding To The Financial Challenges of COVID-19

## Environment in March 2020

- Shutdowns begin
- Financial market cratering
- In-person worship declines/ends

## COVID-Related Steps Taken - March 2020

- Offered assessment deferment to parishes
- Offered no-interest Lines of Credit to parishes from Expansion Fund
- Allowed churches to receive donations through diocesan PayPal account
- Applied and received a \$206k PPP loan
  - Loan was forgiven.
- Net Proceeds of \$175k after TEC assessment.
- Several parishes applied for and received PPP loans

## September 2020

- Markets have largely recovered
- Financial support for parishes has generally remained steady

## Long-Term Risk & Risk Abatement

- Risk of parochial income declining significantly in 2021 therefore affecting survival of parishes and future PFMs.
- PPP loan intended to help the diocese and parishes mitigate those risks

## June 2021

- Received Grant from TEC for \$40,000 to be used as directed by the Diocesan Council.

## A silver lining in the COVID-19 cloud

- There will be a budget surplus as fiscal year 2021 ends
- This is an ongoing situation and due to COVID-19 and delta variant
- Positive variance may exceed \$100K; but unknown until year-end books are closed
- Diocesan Council & Finance Committee are discussing options for unspent funds

The 132<sup>nd</sup> Annual Convention of The Diocese of West Missouri

**NEW LIFE** 



THE  
*Episcopal*  
CHURCH IN

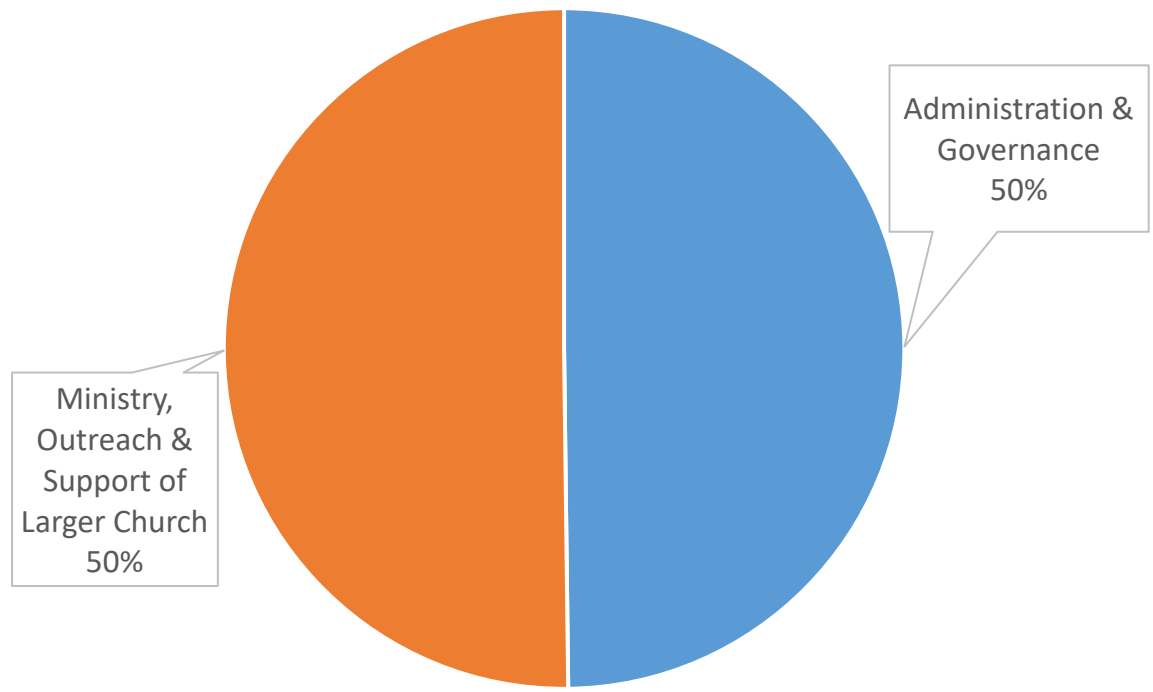
**WEST MISSOURI**

# WHERE WE'RE GOING

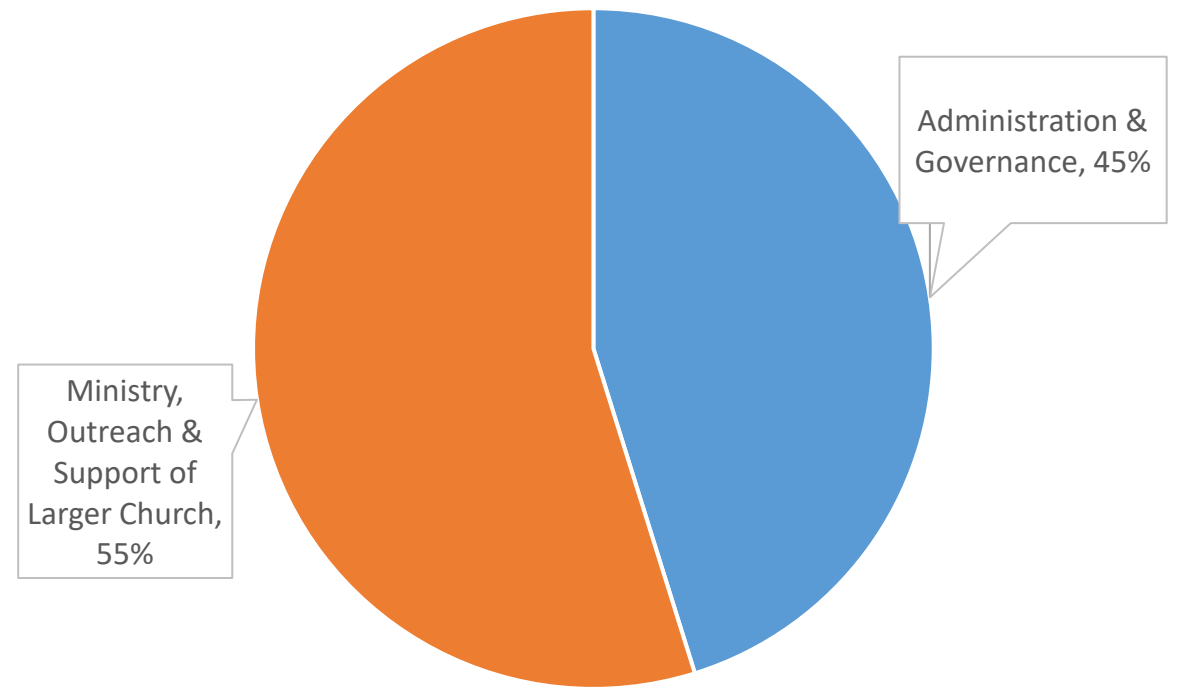


## 2012 vs 2022

2012



2022



- Administration & Governance
- Ministry, Outreach & Support of Larger Church

- Administration & Governance
- Ministry, Outreach & Support of Larger Church

# 2020 Deanery Grants = \$75,000

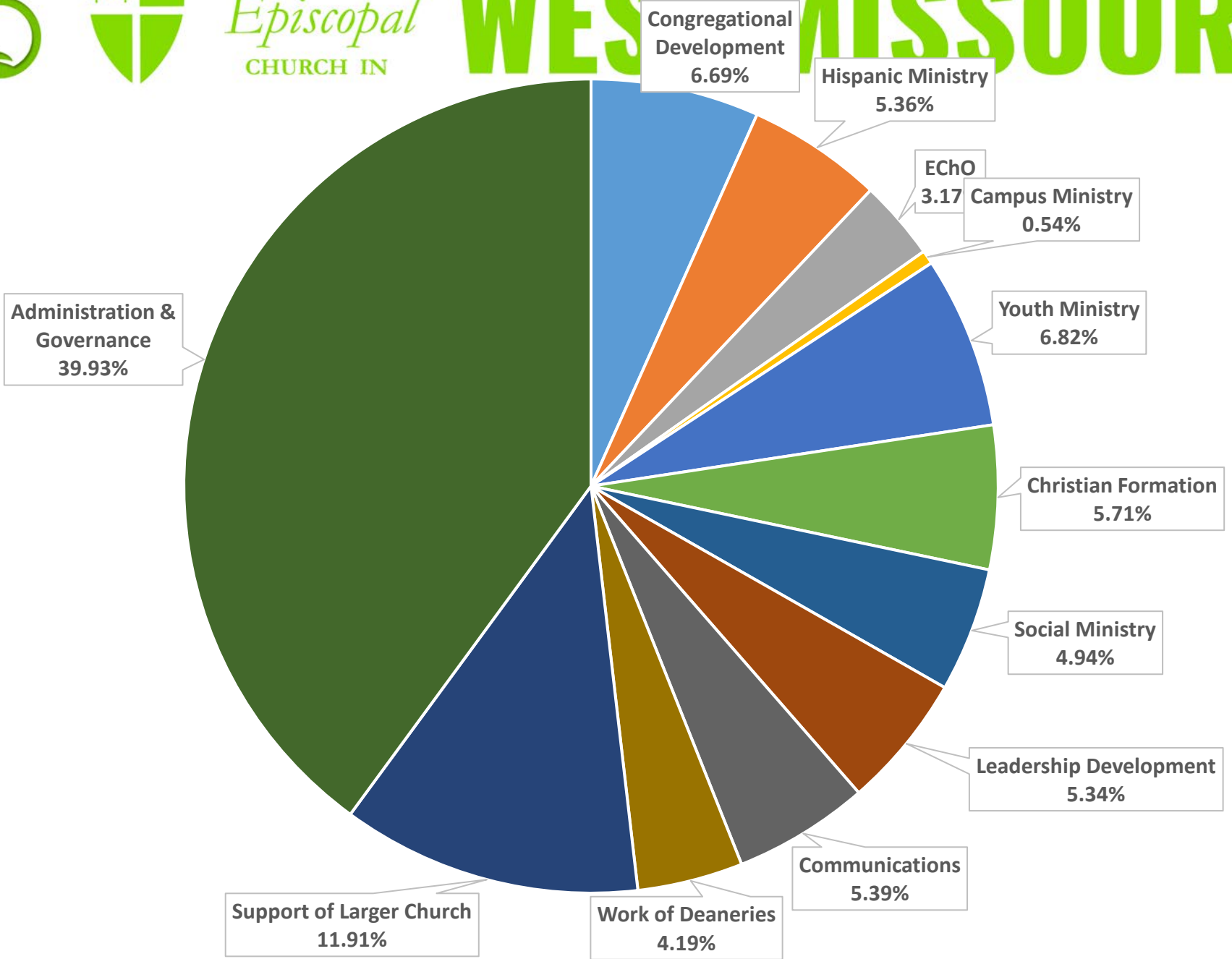
(by category)

<b>Southern</b>	<b>13 Grants</b>	<b>Northwest-Metro</b>	<b>12 Grants</b>	<b>Central</b>	<b>15 Grants</b>
Formation	\$10,360	A/V Streaming Equipment	\$20,652	A/V Streaming Equipment	\$13,420
Hunger/Food/Poverty Relief	\$7,750	Building Maintenance	\$2,236	Evangelism	\$5,780
At-Risk Youth	\$3,100	Creation Care	\$1,254	Hunger/Food/Poverty Relief	\$3,180
Community Development	\$2,790	Hunger/Food/Poverty Relief	\$858	Building Maintenance	\$2,500
AED	\$1,000			Hunger/Food/Poverty Relief	\$120
<b>Total</b>	<b>\$25,000</b>	<b>Total</b>	<b>\$25,000</b>	<b>Total</b>	<b>\$25,000</b>

*\* Reporting 2020 as the 2021 Grant Year is incomplete*

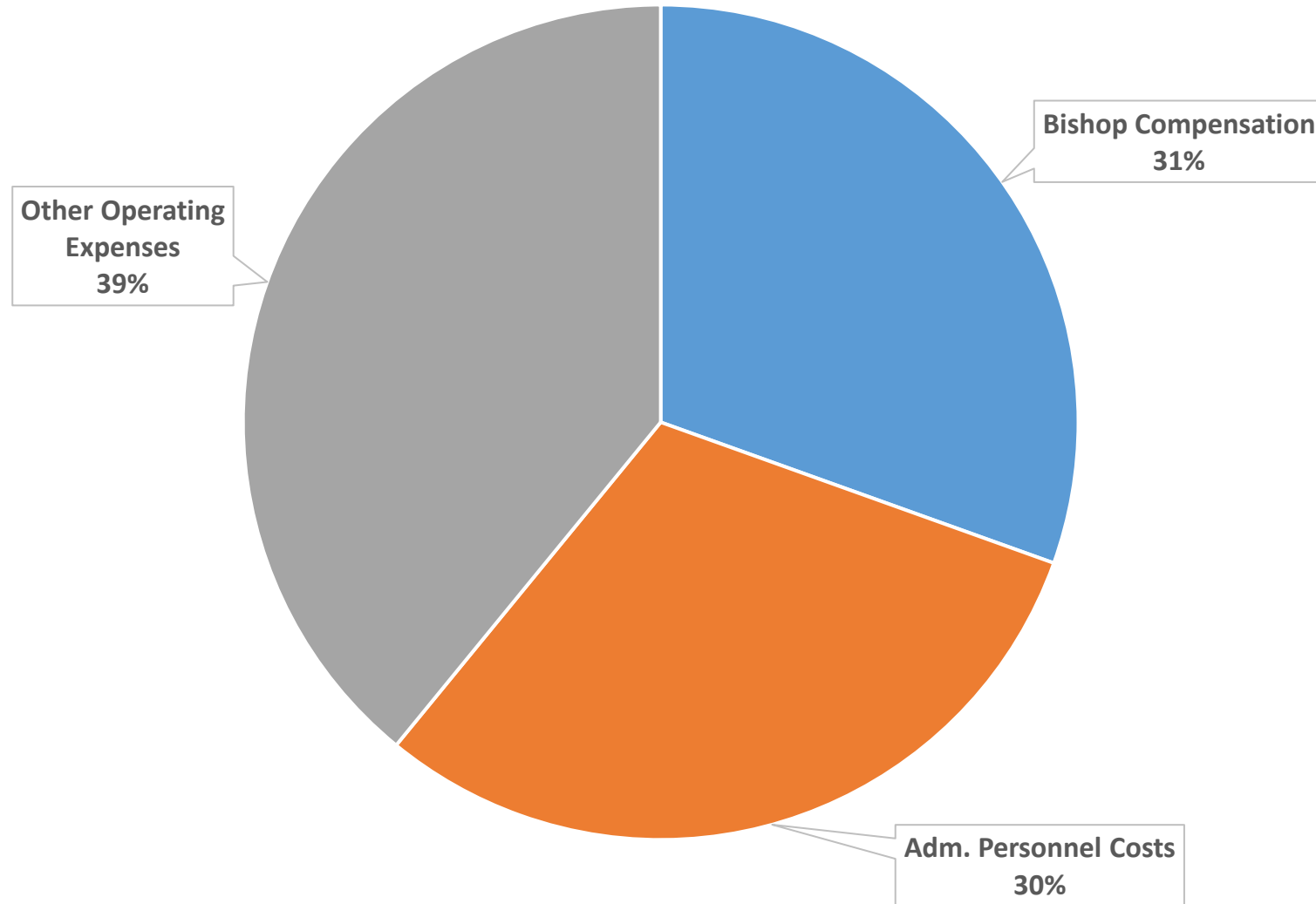


## Detailed Expense Breakdown





# Breakdown of Administration & Governance



# Looking at ourselves in context

Categories	West MO	Average of 11 Dioceses	High (Indianapolis)	Low (Nebraska)
Parishes	47	49	48	<b>53</b>
Baptized Members	9395	9399	9341	<b>7241</b>
Budget	\$1,836,870	\$1,822,579	\$3,493,888	\$806,872
<b><i>Breaking Down the Comparisons</i></b>				
<b>CD &amp; Regional Ministries</b>	<b>19%</b>	<b>18%</b>	<b>16%</b>	<b>18%</b>
Campus Ministry	1%	5%	10%	0%
<b>Youth Ministry</b>	<b>7%</b>	<b>4%</b>	<b>3%</b>	<b>1%</b>
Christian Formation	6%	4%	2%	6%
<b>Social Ministry</b>	<b>5%</b>	<b>3%</b>	<b>1%</b>	<b>2%</b>
Leadership Development	5%	6%	1%	1%
Communications	5%	4%	1%	2%
Support of Larger Church	12%	13%	13%	14%
<b>Admin. &amp; Governance</b>	<b>40%</b>	<b>45%</b>	<b>52%</b>	<b>55%</b>



Please note:

**RESOURCE STEWARDSHIP  
IN 2022**

The 132<sup>nd</sup> Annual Convention of The Diocese of West Missouri

**NEW LIFE** 



THE  
*Episcopal*  
CHURCH IN

**WEST MISSOURI**

Your Questions  
or Comments are

**WELCOME and APPRECIATED!**